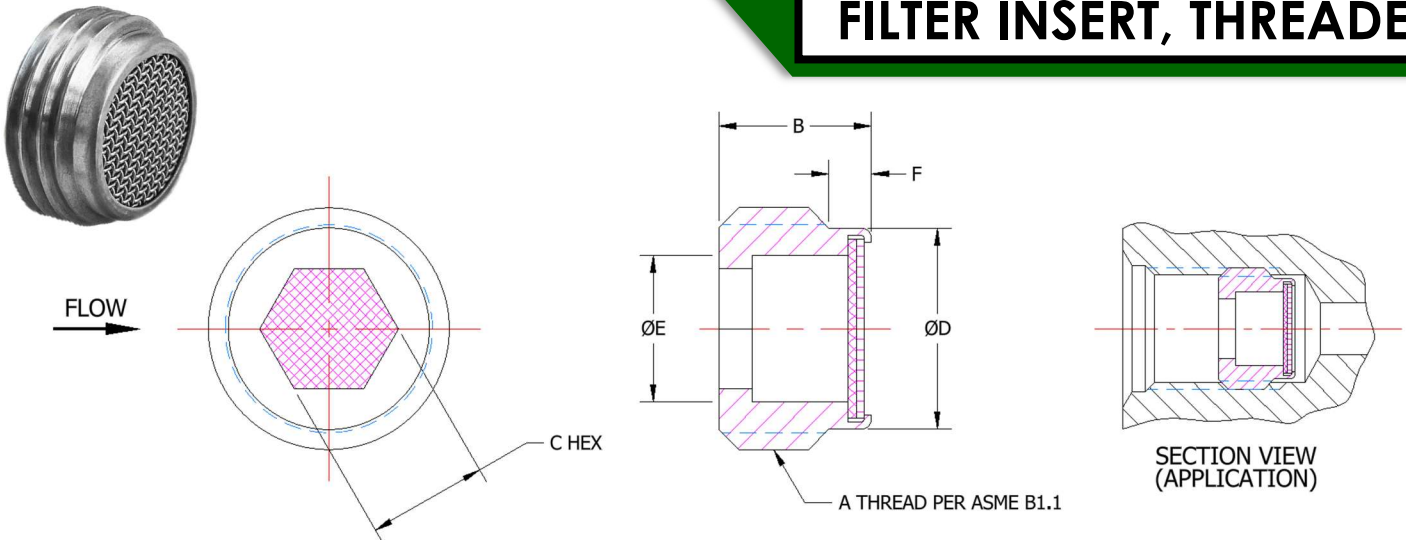


FILTER INSERT, THREADED



SEE FIGURES BELOW FOR FILTER INSERTS WITH VARIOUS OPTIONAL THREADED LOCKING ELEMENTS

PART NUMBER DEFINITION: 84802 - 1 - 2 - 3 - (MATL)

- ADD "P" FOLLOWING MAIN PART NUMBER (84802P) FOR PASSIVATION
- STANDARD PASSIVATION: AMS 2700, METHOD 1, TYPE 2, CLASS 2
- MATERIAL: CRES PER AMS-QQ-S-763, CHEMICAL COMPOSITION ONLY
- FILTER MEDIUM: FILTER CAPABLE OF FILTERING LIQUIDS AND GASES
- FILTER MEDIA: SINTERED STAINLESS STEEL WOVEN WIRE MESH
- STANDARD INSERT (HOUSING) MATERIAL: 303 CRES
- ALTERNATE INSERT MATERIAL: 304 CRES, 316 CRES & 321 CRES
- FOR ALTERNATE INSERT MATERIAL LISTED, CONSULT FACTORY FOR AVAILABILITY
- STANDARD FILTER DISC MATERIAL: 304 CRES ONLY

ADDITIONAL PART INFORMATION:

- MICRON RATING VERIFICATION: PARTICLE CONTROL ASSURED BY BUBBLE POINT TEST PER ARP-901
- OPERATING TEMPERATURE RANGE: -180°F TO +550°F
- THREAD LOCKING ELEMENT MATERIAL: NAS 1283, TYPE N (LOCKING PELLET) OR TYPE P (LOCKING PATCH), NYLON 101 (6/6) PER L-P-410
- CONSTRUCTION: FILTER DISC IS PERMANENTLY SPIN SWAGED INTO INSERT

PLEASE NOTE:

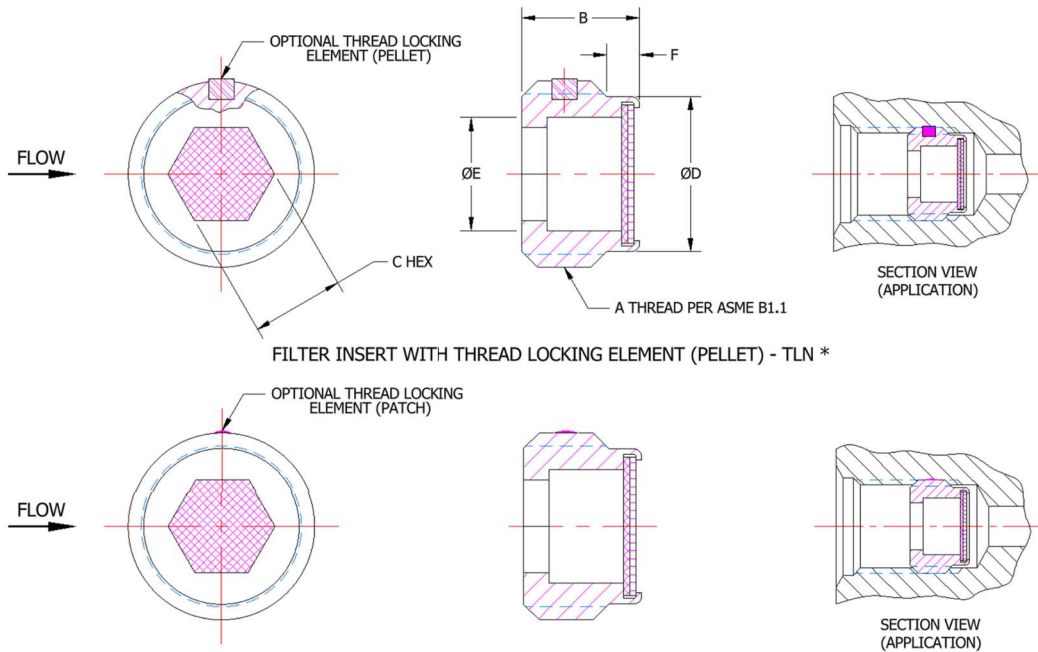
- STANDARD PARTS ARE NOT READILY AVAILABLE; HOWEVER, WE MAINTAIN INVENTORY OF SUB-COMPONENTS TO MINIMIZE DELIVERY TIME ONCE AN ORDER IS PLACED
 - ANY MODIFICATIONS TO STANDARD PART WILL BE RECLASSIFIED AS A CUSTOM PART, REQUIRING A UNIQUE PART NUMBER

PART NUMBER EXAMPLES: 84802-4-17-TLN-304 OR 84802P-6-40



FILTER INSERT, THREADED

PART NUMBER DEFINITION: 84802 - 1 - 2 - 3 - (MATL)



FILTER INSERT WITH THREAD LOCKING ELEMENT (PATCH) - TLP *

Dash No 1	Tube OD	A UNF-3A THREAD	B ± .01	C NOM	D ± .005	E REF	F ± .01	OPTIONAL THREAD LOCKING ELEMENT 3
3	.187"	.3750-24	.21"	.187"	.313"	.22"	.06"	
4	.250"	.4375-20	.27"	.218"	.365"	.27"	.07"	TLN*
5	.312"	.5000-20	.27"	.250"	.427"	.33"	.07"	TLP*
6	.375"	.5625-18	.29"	.312"	.482"	.39"	.08"	NOTE: LEAVE BLANK IF LOCKING ELEMENT IS NOT REQUIRED (SEE PART NUMBER EXAMPLE)
8	.500"	.7500-16	.33"	.375"	.659"	.56"	.09"	
10	.625"	.8750-14	.36"	.500"	.772"	.67"	.10"	
12	.750"	1.0625-12	.43"	.625"	.945"	.84"	.11"	

Micron 2	When Filtering Liquids		When Filtering Gasses	
	Nominal Micron 98% Removal	Absolute Micron 100% Removal	Nominal Micron 98% Removal	Absolute Micron 100% Removal
02	2	15	1	9
05	5	18	3.5	13
10	10	25	6	18
17	17	45	11	25
40	40	65	30	55
70	70	105	50	85
105	105	150	85	130
145	145	205	120	175
250	250	350	200	300